

MODEL: P283

Stainless Steel 3-Piece Ball Valve



TECHNICAL

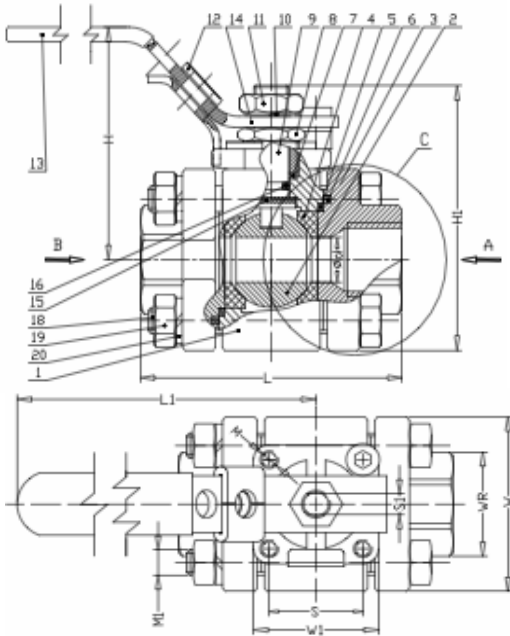
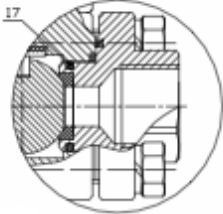
ANSI Class 800 · NACE MR-01-75 ·

Available in Threaded and Socket Weld Ends

Design & Manufacture Per ASME B16.34 · Inspection & Testing Per API 598

Heat Number Tracking/Mill Test Reporting Available

VIEW C
BODY-TO-BONNET CONNECTION
FOR SIZES 3/4", 1", 1-1/4", 1-1/2", AND 2"



BILL OF MATERIALS

No.	Description	Qty	Material
1	Shell (Body)	1	A351 Grade CF8M
2	Ball	1	A182 Grade F316
3	Threaded Bonnet	2	A351 Grade CF8M
4	Seat	2	RTFE
5	Joint Gasket	2	PTFE, teflon
6	Thrust Washer	2	RTFE
7	Packing	1	Graphite
8	Gland	1	A182 Grade F304
9	Stem	1	A182 Grade F316
10	Spring Washer	1	ASTM A177 (A666-03)
11	Nut	1	A2-70 (A193 Grade 8 Class 2)
12	Locking Device	1	A182 Grade F304
13	Handle Cover	1	PVC
14	Handle	1	A182 Grade F304
15	Gasket	1	PTFE, teflon
16	O-Ring	1	Viton
17	O-Ring (see View C)	5	Viton
18	Bolt	4	A2-70 (A193 Grade 8 Class 2)
19	Nut	4	A2-70 (A193 Grade 8 Class 2)
20	Spring Washer	4	ASTM A177 (A666-03)

DIMENSIONAL DATA

Size	d, mm	L*, mm	H, mm	H1, mm	M1, mm	M, mm	S, mm	W, mm	D, mm	W1, mm	L1, mm	S1, mm	WR, mm	Weight, kg
1/2"	12.7	75	58.5	-	M8x1.25	M5	25.4	50.5	38.7	34	115	6.1	30	0.8
3/4"	17.5	80	65.5	11	35	M5	29.5	1.5	45	165	150	9.5	9.5	0.65
1"	22.3	90	74	15.5	35	M5	29.5	2	54	195	150	10	9.51	1.1
1-1/4"	28.5	110	90	15.5	38	M6	150	2	68	205	190	11.5	11.5	2
1-1/2"	35	120	96	18.5	38	M6	35.3	2	82	245	190	10.5	10.5	3
2"	48	140	104.7	18.5	38	M6	35.3	2.5	98	260	230	14	14	4.2

Predator Valve makes every effort to ensure the information presented on our literature accurately reflects product specifications. However, as changes occur, there may be short-term differences between actual product specifications and the information shown on our literature. The above technical data is for reference only.

STRONG

RELIABLE

TOUGH