

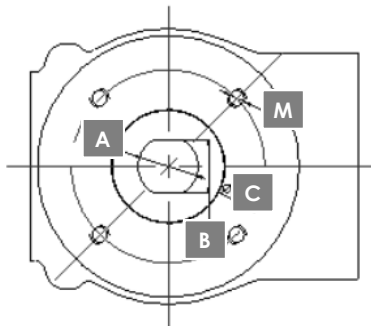
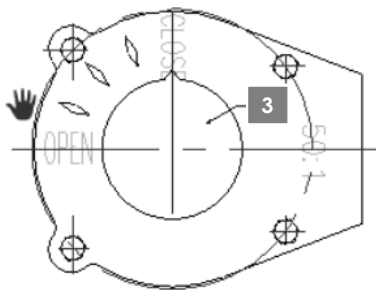
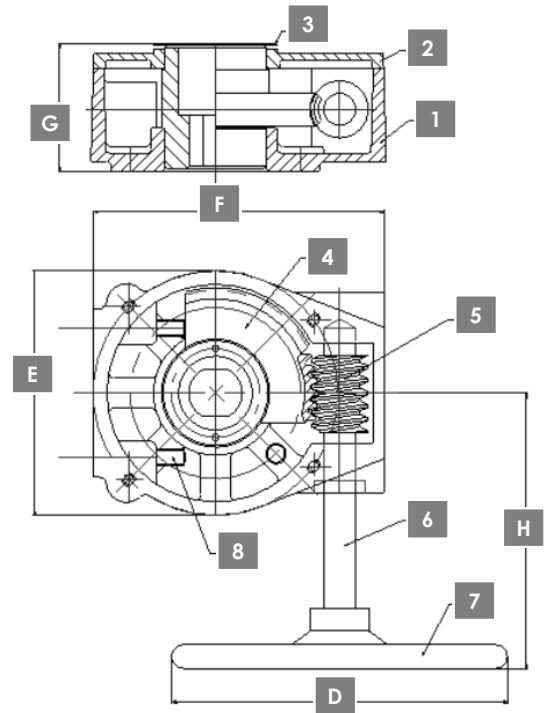
MODEL: EGO

Gear Operator c/w Handwheel



BILL OF MATERIALS

| NO. | DESCRIPTION | MATERIAL |
|-----|----------------|---------------------|
| 1 | Body | Cast Iron |
| 2 | Cover | Cast Iron |
| 3 | Cover Plate | Steel |
| 4 | Worm Gear | Ductile Iron A536 |
| 5 | Worm | Steel |
| 6 | Stem | Steel Chrome Plated |
| 7 | Handwheel | Cast Iron |
| 8 | Position Screw | Steel |



DIMENSIONAL DATA

| SIZE | 4" | 5" | 6" | 8" | 10" | 12" |
|---------|--------|--------|--------|--------|--------|--------|
| in/mm | 15 | 20 | 25 | 32 | 40 | 50 |
| A | 0.62 | 0.75 | 0.75 | 0.87 | 1.13 | 1.25 |
| in/mm | 15.80 | 19.00 | 19.00 | 22.20 | 28.60 | 31.80 |
| B | 0.47 | 0.55 | 0.55 | 0.67 | 0.87 | 0.94 |
| in/mm | 12.00 | 14.00 | 14.00 | 17.00 | 22.00 | 24.00 |
| C | 2.76 | 2.76 | 2.76 | 4.02 | 4.02 | 4.02 |
| in/mm | 70.00 | 70.00 | 70.00 | 102.00 | 102.00 | 102.00 |
| M (mm) | M8 | M8 | M8 | M10 | M10 | M10 |
| D | 5.12 | 5.12 | 5.12 | 8.66 | 8.66 | 8.66 |
| in/mm | 130.00 | 130.00 | 130.00 | 220.00 | 220.00 | 220.00 |
| E | 3.94 | 3.94 | 3.94 | 5.20 | 5.20 | 5.75 |
| in/mm | 100.00 | 100.00 | 100.00 | 132.00 | 132.00 | 146.00 |
| F | 4.65 | 4.65 | 4.65 | 5.98 | 5.98 | 6.81 |
| in/mm | 118.00 | 118.00 | 118.00 | 152.00 | 152.00 | 173.00 |
| G | 2.28 | 2.28 | 2.28 | 3.19 | 3.19 | 2.99 |
| in/mm | 58.00 | 58.00 | 58.00 | 81.00 | 81.00 | 76.00 |
| H | 4.53 | 4.53 | 4.53 | 5.91 | 5.91 | 6.50 |
| in/mm | 115.00 | 115.00 | 115.00 | 150.00 | 150.00 | 165.00 |
| Weight | 6.00 | 8.50 | 8.50 | 14.50 | 14.50 | 18.0 |
| lbs/kgs | 2.72 | 3.86 | 3.86 | 6.58 | 6.58 | 8.16 |

Predator Valve makes every effort to ensure the information presented on our literature accurately reflects product specifications. However, as changes occur, there may be short-term differences between actual product specifications and the information shown on our literature. The above technical data is for reference only.

PREDATORVALVE.COM

STRONG

RELIABLE

TOUGH